

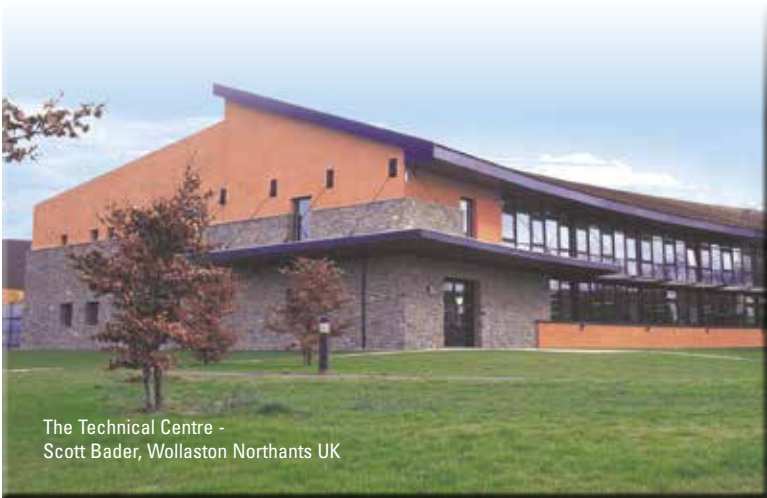


Making a **positive** difference

Ancillary and Reinforcements

Quality products and materials
you can rely on from Scott Bader





Leading supplier of ancillaries
and reinforcements

Scott Bader was established in 1921 and today we are a €257 million global chemical company, employing over 600 people worldwide. With manufacturing sites located around the world, we manufacture, sell and distribute a wide range of synthetic resins and polymers to many different markets and have built a reputation for innovation, quality and excellent customer service.

Over 60 years experience of supplying to markets such as:

- Marine
- Building & construction
- Transport
- Chemical containment
- Wind energy
- Pipes and re-lining
- General industrial

Experts in a range of processing techniques:

- Brush/Spray
- RTM
- RTM light
- Vacuum infusion

Sales Offices

UK HEAD OFFICE

Wollaston, Wellingborough, Northants NN29 7RL
England
Fax: 01933 666524
Email: uksales@scottbader.com

Tel: 01933 666638

IRELAND

Unit 7A, Dunboyne Industrial Estate, Dunboyne,
Co Meath, Ireland
Fax: 00 353 1 8015657
Email: composites@scottbader.ie

Tel: 00 3531 801 5656

Product range may differ, please contact Ireland office
for more details.

Contents

CHAPTER NUMBER	CHAPTER TITLE	SECTION CONTENT	PAGE
1	Reinforcements & core materials	Fibreglass, fabrics and tapes Reinforcements Core & sandwich materials	2 - 3
2	Epoxy systems, cleaning & preparation products	Epoxy systems, preparation & cleaning products	3
3	Curing systems & accelerators	Catalysts & accelerators	4 - 5
4	Mould preparation & finishing	Release agents Polishing Abrasive	6 - 7
5	Small packs and fillers		8
6	Finishing compounds		9
7	Abrasives		10
8	Tools & containers	Resin application Production tools & drum management	11 - 14
9	Mould Making		14
10	GRP Roofing	Roof repair system, roofing trims & accessories	15 - 16
11	Container Management		17

GLASS REINFORCEMENTS

Chopped strand mat (CSM)

E-Glass randomly chopped strand mat for use in hand lay-up and continuous lamination. Compatible with unsaturated polyesters (UP) and vinyl esters (VE) for the production of transparent panels, marine, automotive and general parts production.

Consistent quality, thickness and stiffness
Rapid wet out and air release
Excellent formability for small radius moulds
Good mechanical properties

Available as emulsion or powder bound in 300g, 450g, 600g



Surface tissue

Based on "C" glass, these materials have styrene soluble binders and are widely used for overlaying chopped strand mat laminates. Shiny side up, it produces a smoother finish and a resin rich surface for certain areas that require chemical resistance.

Abrasion resistance
Corrosion resistance
An optically smooth surface
• Mechanical resistance

Available in 250m rolls



SURFACE TISSUE			
MG0005B0000	Surfacing Tissue T1777 100cm	M	Ex Stock

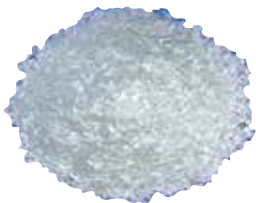
Chopped strands

For use in compounding thermoplastic resins, BMC applications and compatible with thermoplastic and thermoset resins. Also for use in repairs and gap filling.

Available in:

- 6mm or 12mm staple lengths
- Other lengths available to special order

Standard size: 20kg bags



CHOPPED STRANDS			
MY0030A0000	Chopped Strands 6mm Kg	KG	Ex Stock

Woven roving glassfibre tapes

170 g/m², open weave tapes used to join laminates Woven edge produces clean, neat finish

Specialist tapes and fabrics are available on request

WOVEN ROVING GLASSFIBRE TAPES				
100	ME0020A0000	25mm Glassfibre Woven Tape	RL	MTO
100	ME0020B0000	40mm Glassfibre Woven Tape	RL	MTO
100	ME0020C0000	50mm Glassfibre Woven Tape	RL	Ex Stock
100	ME0020D0000	75mm Glassfibre Woven Tape	RL	Ex Stock
100	ME0020E0000	100mm Glassfibre Woven Tape	RL	Ex Stock
100	ME0020F0000	150mm Glassfibre Woven Tape	RL	MTO
100	ME0020G0000	175mm Glassfibre Woven Tape	RL	MTO



MATLINE™ Plus

Is used as a core material or as a sub/layer in many applications: swimming pools, boats and yachts, wind mills, trailers and many more.

Available in thickness from 1 to 5 mm, perforated or non-perforated form. Working with MATLINE™ Plus requires no special tools or skills as it is easily molded into any shape.

WHY CHOOSE MATLINE?

- Better dry drapability
- Reduction of resin consumption of 15-20 %
- Better adherence on vertical application (marine)
- Weight and cost reduction improving rigidity and impact resistance
- Better cosmetics acting as a print through blocker



TYPICAL DATA MATLINE™ +		1mm	2mm	3mm	4mm	5mm
		CM0001A0000	CM0002A0000	CM0003A0000	CM0004A0000	CM0005A0000
Roll length	lm	100	80	50	40	30
Roll width	cm	100	100	100	100	100
Dry weight	g/m ²	55	70	110	140	185
Dry thickness	mm	1.4	2	3	4	5
Resin consumption	kg/m ²	0.77	1.1	1.65	2	2.5
		MTO	Ex Stock	Ex Stock	Ex Stock	Ex Stock

CLEANING PRODUCTS

Acetone

Pure acetone used to clean uncured resin from brushes, tools and equipment. Virgin acetone to BS 509.

ACETONE			
S00005B0000	Brush Cleaner 5 Litre	EA	Ex Stock
S00006A0000	Acetone Pure Drum	EA	Ex Stock
S00006C0000	Acetone Pure 25 Litre	EA	Ex Stock

Clean and protect

The specialist formulation includes poly-beads for easy removal of uncured resin from the skin.



CLEAN AND PROTECT			
PE0018B0000	Kleen-All Paste 5L	EA	Ex Stock
PE0019A0000	Kleen-All Liquid 5L wDispenser	EA	Ex Stock

Swipex

Heavy-duty wipes impregnated with a liquid formula for removing uncured resin/topcoat from hands, tools and general hard surfaces.



SWIPEX			
T0378A0000	Soudal Swipex Heavy Duty Wipes	EA	Ex Stock

PREPARATION PRODUCTS

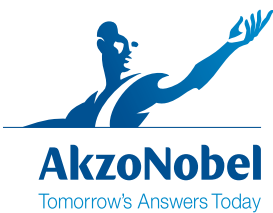
G4 sealant

G4 seal damp out of concrete, brick, stone and wood with a non-porous plastic coating that is hard wearing, tough but flexible. Being moisture cured it can be applied in poor conditions, down to 0°C and in high humidity.

- Features
- Easy to use
- Tough flexible coating
- Seals walls & floors
- Seals moisture out from moulds prior to laying up glass fibre
1kg will cover approximately 6m² (single layer)
- Improves the bond of GRP to metal and/or wood



G4 SEALANT			
M00052A0000	G4 P'urethane Sealant 2.5Kg Tin	EA	Ex Stock
M00052A0001	G4 P'urethane Sealant 1Kg Tin	EA	Ex Stock
M00052A0005	G4 P'urethane Sealant 5Kg Tin	EA	MTO
M00052A0025	G4 P'urethane Sealant 25Kg Tin	EA	MTO



AkzoNobel has a long history in organic peroxides, starting with benzoyl peroxide for the bleaching of flour in the early 1920s. Today, they are the world's top producer of organic peroxides for the curing of thermoset resins, coatings and specialty monomers. They cover classes such as ketone peroxides, diacyl peroxides, peroxyesters, peroxyketals, hydroperoxides and peroxy(di)carbonates. These products are marketed under well-known trademarks such as Butanox®, Cyclonox®, Trigonox® and Perkadox®. They are always striving for the right solution and offer a whole range of auxiliary products, such as accelerators and promoters, to meet customers' specific production requirements.



METHYL ETHYL KETONE PEROXIDES (MEKPs)		Ambient Temperature			Elevated Temperature				High Temperature	Special Resins
		Hand lay-up and Spray-up	Resin Transfer Moulding RTM	Gelcoats	Filament Winding	Resin Transfer Moulding RTM	Gelcoats	Continuous Laminating	Pultrusion	Vinylesters
Butanox M-50	Standard, general purpose. Low water content - ideal for gelcoats / marine	✓	✓	✓	✓		✓	✓		✓
Butanox M-50 VR	Vanishing red version of M-50	✓	✓	✓	✓		✓	✓		✓
Butanox HBO-50	Much faster geltime version of M-50	✓	✓	✓				✓		
Butanox LA-IN	Slower geltime version of M-50	✓	✓	✓	✓			✓		✓
Butanox LPT-INVR	Vanishing Red. Much slower geltime version of M-50. Ideal for Filament winding	✓	✓	✓	✓		✓			✓
Butanox P-50	Geltime as M-50 but faster cure. Perfect for gelcoats	✓	✓	✓	✓		✓	✓		✓
Trigonox 249VR	Lower exotherms than standard MEKP's - good in hot weather. App's include cast polymer & laminates									

CYCLOHEXANONE PEROXIDES										
Cyclonox LE-50	More gradual cure and lower peak exotherm than M-50	✓								

DI-BENZOYL PEROXIDES										
Perkadox CH-50X	BPO powder. 50% peroxide in free-flowing form. Powder form	✓	✓						✓	✓
Perkadox CH-50L	As CH-50X but used where high clarity transparency is needed. Powder form	✓	✓						✓	✓
Perkadox L-40RPS	Phthalate-free 40% low viscous sprayable suspension									
Perkadox L-W40SN	Phthalate-free 40% BPO water based sprayable version									
Perkadox BM-50LS	Standard BPO-paste. 50 % peroxide									
Perkadox BM-50LS Red final	A red coloured version of BM-50LS									
Perkadox BM-50R	Standard BPO-paste. 50 % peroxide									
Perkadox CH-34RP	BPO powder in filler. Unrestricted on transportation - not classed as dangerous goods									

OTHER PEROXIDES										
Trigonox 44B	Liquid AAP gives similar gel time to Butanox M-50 with much faster cure	✓	✓	✓				✓		
Trigonox 61	Liquid AAP giving faster cure than Butanox M-50 but slower than Trigonox	✓	✓	✓	✓			✓		
Trigonox 524	Liquid peroxide for RTM if longer gel times and very rapid cure is needed					✓		✓		
Trigonox 239	Liquid Cumene Hydroperoxide for curing vinyl ester resin in combo with a cobalt accelerator									✓
Trigonox 42S	Suitable for curing Hot Press Mouldings at 120° – 170°C								✓	✓
Trigonox C	Aromatic Perester for curing Hot Press Mouldings at 120° – 170°C. Also suitable for curing UP resins in combination with a cobalt accelerator at temperatures above 70°C								✓	✓
Trigonox 63	Suitable when shorter demould time than Butanox M-50 is needed but high peak exotherm of Trigonox 44B is not acceptable	✓	✓		✓			✓		
Trigonox 75	Medium reactive MEKP, with reduced peak exotherm	✓	✓		✓					
Trigonox 269	AAP/perester with efficient cure				✓	✓		✓		
Trigonox 93	Trigonox C with promotor					✓	✓	✓	✓	✓
Trigonox 21S	Needs transport and storage below 20°C. Used for hot press moulding & pultrusion								✓	✓
Perkadox 16	Needs transport and storage below 20°C. High reactive percarbonate. Pultrusion. Powder form								✓	✓



Scott Bader catalysts

Catalyst M	General purpose catalyst. Low water content. 30kg pack sizes
------------	--

Accelerators, inhibitors & promoters

COBALT ACCELERATORS	
Accelerator NL-49P	A solution of cobalt in aliphatic ester. 1% Cobalt content
Accelerator NL-51P	Same as NL-49P, but with a cobalt content of 6%
Accelerator NL-53	A solution of cobalt in white spirit. Cobalt content of 10%
Nouryact 383S	Non-toxic low Cobalt metal complex
Nouryact 553S	Non-toxic low Cobalt metal complex
Nouryact 55028	For use in highly filled UP resins
Nouryact LCC9	Low Cobalt metal complex
Accelerator CF12	Copper-based accelerator complex
Accelerator CF13	Copper-based accelerator complex
Accelerator CF20	Manganese-based accelerator complex

ANIME ACCELERATORS	
Accelerator NL-64-100	100 % Di-Ehyl aniline (DEA) gives a longer gel time compared with NL-65
Accelerator NL-65-100	100 % Di-methyl-p-toluidine gives a shorter gel time compared with NL-65

INHIBITORS	
Inhibitor NLC-10	To lengthen the geltime of a UP resin

PROMOTERS	
Promotor C	2,4-Pentanedione, 99%
Promotor D	N,N-Diethylacetamide, 97%

Directives for the safe handling and storage of Akzo Nobel Peroxides

STORAGE

Organic peroxides should be stored in their original packings at 25°C max., unless otherwise indicated on the label. Organic peroxides should be protected against all sources of heat, even direct sunlight. Storage together with other chemicals, especially ACCELERATORS, other reducing materials and inflammable products, must be avoided.

HANDLING - FIRE HAZARD

No smoking, no naked lights, no sparks or other sources of ignition.

HANDLING - EXPLOSION HAZARD

Avoid direct contact of organic peroxides with accelerators; add each component separately to the resin. Contamination with dust, heavy metals and their compounds, as well as chemicals in general, should be avoided.

HANDLING - EYE & SKIN INJURY

Always wear safety goggles and protective gloves since organic peroxides have a corrosive effect on eyes and skin.

RELEASE AGENTS

Frekote FREWAX

Frekote FREWAX is a combination of wax and a polymer release agent. This combination provides the user with the advantages of an easy-to-apply liquid wax and the multiple release performance of a semi-permanent release.

Easy to use
Visible release agent
High gloss finish
Combines the familiar application of a liquid wax and semi permanent performance



Frekote 770-NC

A versatile release agent which provides high slip where mould geometry problems are encountered.

- Fast room temp cure
- High gloss and high slip
- For making non-gelcoated mouldings (eg in closed mould processes)
- Excellent for UP, epoxy and phenolic resins

Frekote FRP-NC

Frekote FRP-NC is a semi-permanent release interface specifically formulated for reinforced polyester gelcoats. It provides minimal mould build-ups thus eliminating buffing and cleaning between applications.

- Minimal mould build-up
- Maximum mould utilisation
- High gloss finish
- For producing gelcoated mouldings when a gloss is required

Frekote 44-NC

Frekote 44-NC is a semi-permanent release polymer designed to provide multiple release for most moulding processes with no contaminating transfer. Apply to clean mould surfaces by wiping, brushing or spraying a thin continuous wet film.

- Matt finish
- No mould build-up
- No contaminating transfer
- High thermal stability
- Excellent for UP and epoxy resins

Frekote WOLO

A unique release agent that cures quickly and provides multiple releases. Application and use is simple - wipe on, allow to evaporate to produce a high gloss finish. No polishing is needed.

- For producing gelcoated moulding when a gloss is required
- Low odour

Frekote 700-NC

A slower version of 770-NC



RELEASE AGENTS			
RA0001C0000	Frekote 1 Step 5L	EA	MTO
RA0002C0000	Frekote 44 NC 5 Litre	EA	MTO
RA0003C0000	Frekote 55 NC 5L	EA	MTO
RA0004C0000	Frekote 700 NC 5 Litre	EA	Ex Stock
RA0005C0000	Frekote 770 NC 5 Litre	EA	Ex Stock
RA0006A0000	Frekote B15 1 Litre	EA	MTO
RA0007B0000	Frekote FMS 1 Litre	EA	Ex Stock
RA0009C0000	Frekote FRP NC 5 Litre	EA	Ex Stock
RA0010A0000	Frekote WOLO 1 Litre	EA	MTO
RA0010C0000	Frekote WOLO 5 Litre	EA	Ex Stock
RA0011A0000	Frekote Frewax 1 Litre	EA	MTO
RA0011C0000	Frekote Frewax 5 Litre	EA	Ex Stock
SO0003A0000	Frekote PMC 5 Litre	EA	Ex Stock

APPLICATION	PRODUCT	WIPE ON WIPE OFF	WIPE ON DELAY WIPE OFF	WIPE ON LEAVE ON	WIPE ON LEAVE TO HAZE WIPE OFF	BASE COATS	MINIMUM INTERVAL BETWEEN COATS (AT ROOM TEMP) MINS	MINIMUM CURE TIME BEFORE USING (AT ROOM TEMP) MINS
Mould cleaner	PMC	✓					5	
Sealer for uncured moulds	FMS		✓			1-3	15	20+
Mould release agents	FRP-NC		✓			6	10	20
	44NC			✓		4 - 6	15	100
	770NC			✓		4	5	20
	FREWAX				✓	4	0	0
	WOLO			✓		5	5	15

MOULD PREPARATION

Frekote FMS

Use to seal new moulds and older moulds with micro-porosity and light surface blemishes. An excellent base coat enhancing the release advantages of all Frekote® products.

Easy to apply
Fast cure
Seals mould porosity



Frekote B-15

Formulated to seal mould micro porosity and light surface scratches.

Easy to apply
Seals mould porosity
High thermal stability



Frekote PMC

A special blend of solvents that dissolves and removes wax from composite moulds without dulling the surface. Excellent for epoxy and metal mould surfaces.

Eliminates contaminants
Enhances release effectiveness
For cleaning moulds before Frekote products are first applied
Excellent for removing wax build-up



OTHER RELEASE AGENTS

Mirror Glaze professional paste wax

Higher temperature resistance than M0811.



Mirror Glaze maximum mould release wax

Gives the maximum number of releases for a wax release agent. Good for use on tooling and new moulds (new moulds require 3 coats). One coat on cured moulds offers 5 to 10 releases. Excellent gloss.



Mirror Glaze universal mould release wax

Very easy to apply and remove. Excellent "storage" wax.



Honey wax

Soft paste carnauba wax. Leaves a durable wax surface allowing multiple pulls. Easy to hand apply.



OTHER RELEASE AGENTS			
RA0012A0000	Mirror Glaze M1611 Prof Wax 11oz	EA	Ex Stock
RA0013A0000	Mirror Glaze M0811 Max Mould Wax 11oz	EA	Ex Stock
RA0040A0000	Mirror Glaze M8811 Universal Wax 11oz	EA	MTO
MO0050A0000	Honeywax 14oz Tin	EA	Ex Stock

Crystic glosscoat

A spray applied rapid curing material can be used to surface crystic primecoat where a harder, glossier and more durable surface is required.

CRYSTIC GLOSSCOAT			
C10130B0000	5KG	MTO	

Crystic primecoat

A spray applied high build rapid curing primer for surfacing patterns. It is very quick and easy to abrade and can be polished to a gloss good enough for many applications.

CRYSTIC PRIMECOAT			
C10024B0000	5KG	Ex Stock	
C1002410025	25KG	Ex Stock	

MW solution

A wax solution added to resins and gelcoats at the rate of 2% where a completely tack free surface is required.

MW SOLUTION			
SP0009B0000	Crystic Solution MW (4Kg)	KG	Ex Stock

Liquid PU foam

Part 1 & 2 are thoroughly mixed 1:1 by volume to produce a rigid foam of approx 42 kg/m³. It expands very rapidly to approximately 20 times by volume and is used in general gap filling applications. This product is CFC and HCFC free.

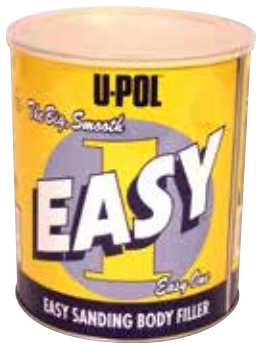
LIQUID PU FOAM			
PU000610025	SB PU Foam Pack 1 of 2 25Kg	KG	MTO
PU0006A0001	SB PU Foam Pack 1 of 2 1Kg	KG	MTO
PU0006B0005	SB PU Foam Pack 1 of 2 5Kg	KG	MTO
PU0008B0001	SB PU Foam Pack 2 of 2 1Kg	KG	MTO
PU0008B0006	SB PU Foam Pack 2 of 2 6Kg	KG	MTO
PU0007A0000	PU Foam Part 1 200Kg Drum	KG	MTO
PU0009A0000	PU Foam Part 2 250Kg Drum	KG	MTO



FILLERS

U-POL EASY ONE®

Very easy sanding polyester body filler ideal for larger repairs. Pinhole free and exceptionally easy to sand even the next day.



U-POL EASY ONE			
FL0005A0000	Easy One 3.5L Can	EA	Ex Stock

Filler powder

A magnetic talc powder used in polyester resins to reduce exotherm in casting applications.

FILLER POWDER			
FL0001A0000	Filler Powder S2 200 25Kg Bag	EA	Ex Stock

Iron silicate grit



IRON SILICATE GRIT			
FL0036A0000	Iron Silicate Grade 3 25Kg	KG	Ex Stock

PROFILE PREMIUM

Liquid Compound

Profile Premium Liquid Compound is a high performance, water-based cutting compound which removes P1200 or finer sanding marks from production gel coats and painted finishes, and is the perfect solution for restoring oxidised and weathered gel coat surfaces. Great on dark colours, it delivers a high gloss finish and is used as a one-step product on white gel coats and as the first stage of a two part compounding process where higher gloss and lower swirl is required.



Coarse Cut Paste Compound

Premium Paste Compound is a medium aggressive, water-based cutting compound capable of removing up to P800 sanding marks as well as delivering a high gloss finish. With added lubrication, it is also resistant to drying out in hot conditions and on large surfaces. Often used as the sole compound on white gel coats, it can be applied in the first stage of a two part compounding process where higher gloss and lower swirl is required.



PROFILE SELECT

Liquid Compound

Profile Select Liquid Compound performs best when shaken before use and run at high speed (2000 - 3500rpm). It is a great value, versatile cutting compound aimed at OEM applications.

Used with a G Mop Twisted Wool Compounding Pad, Profile Select quickly removes P800 or finer sanding marks from tooling or production gel coats in a one-step process.

On painted surfaces, used with a G Mop Lambs Wool Pad, it will very quickly remove P1500 sanding marks and leave a good finish which can be enhanced with Profile Finish if desired.

PROFILE SELECT LIQUID COMPOUND			
AB0178A0000	Farecla Profile Select Liq 1L	EA	MTO
AB0178B0000	Farecla Profile SelectLiq 3.8L	EA	MTO
AB0182A0000	Farecla Profile Premium 1L	EA	MTO
AB0182B0000	Farecla Profile Premium 3.8L	EA	MTO
AB0182C0000	Farecla Prof Prem Paste 3.5kg	EA	MTO



Other Farecla Profile Compounds and Applicators are available upon request

SIA ABRASIVES

The **sia group**, belonging to the Bosch group of companies and headquartered in Frauenfeld, Switzerland, ranks among the world's top three suppliers of coated abrasives. sia Abrasives develops, manufactures and markets complete abrasive systems tailored to specific requirements and applications for surface preparation and finishing of all kinds. sia Abrasives is represented with partners in over 80 countries.



NEW FIBOTEC MULTI-HOLE TECHNOLOGY: WORKS UP TO 50% FASTER

The FiboTec multi-hole technology is based on a string of numbers known as the Fibonacci Sequence. As a hole pattern, the resultant spiral structure, which crops up time and time again in nature, provides superior dust extraction, significantly reduced clogging and therefore longer abrasive life.

- Works up to 50% faster due to better dust extraction and less clogging
- Higher productivity
- Higher process stability
- Better occupational health and safety



sia Paper Rolls

Aluminium oxide grit for longer life and better cut, or silicon carbide finishing rolls. Plyable and strong for hand sanding. Sterated to reduce clogging give long life and good finish

Available in 40-600 grit 50 lm

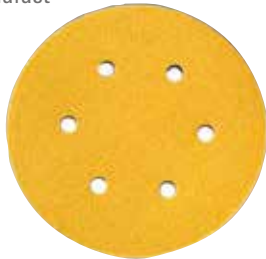


siafast Discs

For manual use and use by machines
Fast and safe change of abrasive with siafast hook and loop fastening system
Low clogging
Gives a very consistent finish

Available in

5" or 6" diameter
6, 7 & 15 holes
40-600 grit



sia Wet & Dry Sheets

Waterproof sheets with strong flexible backing paper for coarse - fine wet sanding
Aluminium oxide grain
Ideal for fine sanding of GRP, lacquers and paints
No reduction of quality after longer soaking time
No troublesome backing paper curling
Very fine finish
Smooth, even surfaces even on curved work pieces
Adapts readily to contours
Can be folded and cut to any desired size

Available in 60-1200 grit



Swivel Pole Sanding Head*

The swivel pole sander head has a heavy duty cast aluminium body. Able to move and rotate in all directions, it is used with the extension pole to easily abrade large flat GRP areas. Abrasive paper is securely clamped onto the head which has a cellular rubber underside to ensure even contact with the substrate.

*Extension pole is not included. (see page 18)

T00365A0000



PADDLE ROLLERS	WIDTH	DIAMETER	EX STOCK/MTO
T00336A0000	50mm	15mm	MTO
T00334A0000	70mm	15mm	MTO
T00337A0000	100mm	15mm	MTO
T00196A0000	70mm	21mm	Ex Stock
T00197A0000	140mm	21mm	Ex Stock
T00198A0000*	180mm	21mm	Ex Stock
T00344A0000*	225mm	21mm	MTO
T00199A0000	70mm	40mm	MTO
T00200A0000	140mm	40mm	MTO
T00201A0000*	180mm	40mm	Ex Stock
T00195A0000*	225mm	40mm	Ex Stock

DISC ROLLERS	WIDTH	DIAMETER	EX STOCK/MTO
T00202A0000	40 x 300mm length		Ex Stock

CONSOLIDATING ROLLERS		EX STOCK/MTO
T00091A0000	Bubble Reduction Roller 70x21	Ex Stock
T00092A0000	Bubble Reduction Roller 140x21	Ex Stock

FINNED ROLLERS	WIDTH	DIAMETER	EX STOCK/MTO
T00204A0000	35mm	14mm	MTO
T00205A0000	70mm	12mm	MTO
T00206A0000	70mm	30mm	Ex Stock
T00207A0000	140mm	22mm	Ex Stock
T00363A0000*	235mm	22mm	Ex Stock

BRISTLE ROLLERS	WIDTH	DIAMETER	EX STOCK/MTO
T00324A0000	100mm	22mm	MTO
T00325A0000	100mm	28mm	MTO
T00326A0000	150mm	22mm	MTO

BRISTLE ROLLER REFILL ONLY	WIDTH	DIAMETER	EX STOCK/MTO
T00330A0000	100mm	22mm	MTO
T00332A0000	150mm	22mm	MTO



* Features screw thread handle to allow attachment of extension pole (see page 18)

Exclusive to Scott Bader, these high quality rollers are made with steel frames, aluminium heads and high grade plastic handles carrying the Scott Bader logo. They provide a smooth running action and have been heavily tested to ensure quality and performance when used daily with resin and acetone. The range incorporates paddle, fin, bristle and disc roller in the sizes below, but we can also produce made-to-order sizes dependent on your specific requirements.



BRUSHES



SIZE		Wooden Handle Brush		Plastic Handle Brush		Specialist Gelcoat Brush	
0.5"	13mm	BR0015A0000	MTO	BR0024A0000	Ex Stock	-	
1"	25mm	BR0010A0000	Ex Stock	BR0025A0000	Ex Stock	-	
1.5"	38mm	BR0011A0000	MTO	BR0026A0000	MTO	-	
2"	50mm	BR0012A0000	Ex Stock	BR0027A0000	Ex Stock	BR0049A0000	MTO
3"	75mm	BR0013A0000	Ex Stock	BR0028A0000	Ex Stock	BR0050A0000	
4"	100mm	BR0014A0000	Ex Stock	BR0029A0000	Ex Stock		
6"	150mm	-		-		BR0052A0000	MTO



ROLLERS

			REFILLS (Comes in packs of 8 or 10)				
	SIZE	FRAMES	3-4mm pile	12mm pile	13mm pile	18mm pile	22mm pile
			Recommended for GELCOATS	Recommended for RESINS			
PUSH ON	4" (100mm)	TO0119A0000 (27 cm handle)	 Velour TO0117A0000	 Acrylic TO0108A0000	 Nylon TO0118A0000	-	-
	6" (150mm)	TO0110A0000 (taper handle)	 Velour TO0112A0000	-	-	 Nylon TO0114A0000	 Polyester TO0113A0000
	7" (175mm)	TO0120A0000	 Velour TO0122A0000	-	-	-	 Polyester TO0121A0000
	10" (250mm)	TO0115B0000	 Velour TO0121B0000	-	-	 Nylon TO0120B0000	-
BOLT ON	6" (150mm)	TO0107A0000	 Velour TO0106A0000	-		 Polyester TO0105A0000	

ACCESSORIES

Extension pole



Metal Telescopic Pole 80-135cm (32-53") comes with a screw and taper cone to allow fitment to majority of handles.

TO0116A0000

* All rollers can be attached to an extension pole to make working much faster, easier and safer.

CONTAINERS

Buckets

Plastic buckets with handles for mixing or storing resins. Available with or without lids.



ITEM NUMBER	WHITE BUCKETS	U/M	EX STOCK/MTO
CO0009B0000	600ml Plain Container	EA	MTO
CO0035A0000	5 Litre White Bucket	EA	Ex Stock
CO0036A0000	Lid for 5 Litre Bucket	EA	Ex Stock
CO0037A0000	10 Litre White Bucket	EA	Ex Stock
CO0038A0000	Lid for 10 Litre Bucket	EA	Ex Stock
CO0039A0000	3 Litre White Bucket	EA	Ex Stock
CO0064A0000	Lid for 3 Litre Bucket	EA	Ex Stock
CO0065A0000	1 Litre White Bucket with Lid	EA	Ex Stock
CO0067A0000	25 Litre White Bucket with Lid	EA	Ex Stock

DISPENSERS

Catalyst dispensers

For measuring and dispensing up to 15ml of liquid catalyst.



ITEM NUMBER	CATALYST DISPENSERS	U/M	EX STOCK/MTO
TO0040A0000	SB Cat Dosimeter 15ml/500ml	EA	Ex Stock
TO0041A0000	SB Cat Dosimeter 80ml/1000ml	EA	Ex Stock

9oz paper cups

For mixing very small quantities of resin.

ITEM NUMBER	PAPER CUPS	U/M	EX STOCK/MTO
CO0013A0000	8oz Paper Cups (Whizz)	EA	MTO

Mixing sticks

Wooden spatulas for mixing small quantities of resin or gelcoat.

ITEM NUMBER	MIXING STICKS	U/M	EX STOCK/MTO
TO0158A0000	Mixing Sticks (box of 100)	EA	Ex Stock

PERSONAL PROTECTIVE EQUIPMENT

Disposable overalls

To keep your workwear cleaner and protected.



Specialist PPE is also available upon request, including:
Industrial gloves
Disposable Nitrile Gloves
Respiratory masks
and more
Subject to minimum order quantities.
Please contact our sales team for details

ITEM NUMBER	ITEM NAME	U/M	EX STOCK/MTO
PE0010B0000	Disposable Overall Tyvek L	EA	Ex Stock
PE0010C0000	Disposable Overall Tyvek XL	EA	Ex Stock
PE0010D0000	Disposable Overall Tyvek XXL	EA	MTO

Disposable gloves



ITEM NUMBER	ITEM NAME	U/M	EX STOCK/MTO
PE0028C0000	Disposable Latex Gloves Large	EA	Ex Stock
PE0028D0000	Disposable Latex Gloves XL	EA	Ex Stock

GRP TOOLS



ITEM NUMBER	DRUM STANDS	U/M	EX STOCK/MTO
T00152A0000	Drum Stand w Wheels on Bottom	EA	MTO
T00153A0000	Drum Stand Static (no wheels)	EA	MTO
T00156A0000	Drum Stand with Wheels Top	EA	MTO
T00157A0000	Drum Stand w Wheels Top/Bottom	EA	MTO

DRUM EQUIPMENT

Drum taps / Keys



ITEM NUMBER	DRUM / KEG EQUIPMENT	U/M	EX STOCK/MTO
T00048A0000	Drum Tap	EA	Ex Stock
T00171A0000	Drum Key type B2	EA	MTO
T00225A0000	Spanner For Drum Taps	EA	MTO
T00072B0000	Acetone Tap Plastic	EA	MTO
T00047A0000	Catalyst Tap	EA	MTO

Putty Applicators

Putty applicators for the application of pastes

Syringes
Coloured Cotton Rags
Stockinettes
Plastic Rigid
Wedges



ITEM NUMBER	MISCELLANEOUS	U/M	EX STOCK/MTO
T00146A0000	Putty Applicators (Pkt of 10)	EA	MTO
T00148C0000	Syringes 20ml	EA	MTO
T00162B0000	Coloured Cotton Rags 10Kg Bag	BG	MTO
T00173C0000	Stockinette 800gm Roll	EA	Ex Stock
T00175A0000	Plastic Rigid Wedge 7" x 3"	EA	MTO
T00176A0000	Plastic Rigid Wedge 5" x 2"	EA	MTO

Mould wedges for separation of moulding without damage. Rigid variety.

MOULD MAKING

Newplast

A non toxic general purpose modelling material widely used for temporary filling and filleting applications. Standard colour white or black (other colours available subject to a minimum order quantity).

Ex Stock

ITEM NUMBER	ITEM NAME	U/M	EX STOCK/MTO
M00028A0000	Newplast White 500g	EA	Ex Stock



Mastermould cold cure silicone rubber

Supplied as two-part pack (white base and blue catalyst). Mix thoroughly and pour to produce durable, high-definition moulds with excellent reproduction of fine detail.

MTO

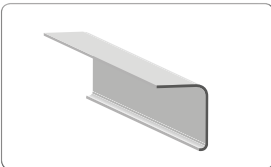


Other mould making products are available upon request. Subject to minimum order quantities. Please contact our sales team for details.

ROOFING TRIMS

Our GRP Roofing Trims are manufactured in the UK using high quality resin and glass fibre. They have been tried and tested to result in the best combination of strength and flexibility. All trims are finished in a light grey colour and cut to a 3m length except the "F" range and corners. The trims have a high adhesion matt finish on one side ready for bonding and a gloss finish on the topside ready for applying the topcoat.

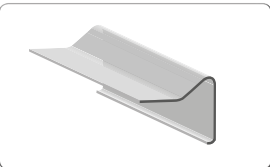
Standard 3m length
Manufactured with 600m² mat with 30% filler - premium strength
Consistent weight and thickness
Market leading finish and appearance
Easy jointing - simple overlap by 50mm and use PU adhesive



A170/A200/A250 Drip Trim

Fitted to the roof edges to allow drainage into the gutter

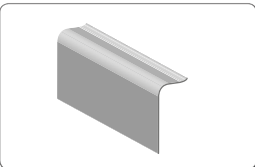
- A170 (75 x 84mm),
- A200 (90 x 90mm),
- A250 (95 x 140mm)
- A200A (95 x 90mm) – same A200, but with return



B240/B260/B300 Raised Edge Drip Trim

Fitting to the roof edges as per A range, but with raised edge to prevent water running off roof

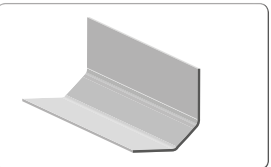
- B240 (100 x 105mm),
- B260 (130 x 125mm),
- B300 (110 x 175mm)



C100/C150 Simulated Lead Flashing

Replaces traditional lead flashing. Dark grey coloured. Do not topcoat

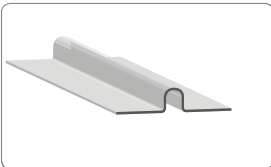
- C100 (100 x 35mm)
- C150 (150 x 35mm)



D260 Wall Fillet

Used to butt against walls. Also, provides perimeter expansion gap

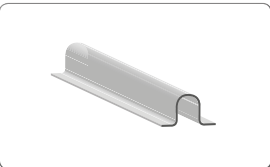
- D260 (120 x 60 x 80mm)



E280 Raised Ridge Roll

Used to bridge GRP to felt roofs, and create expansion joints on large roofs

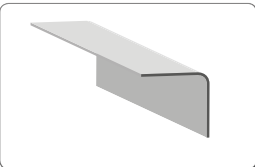
- E280 (65 x 200mm)



ER40/30 Pre-formed Rib Detail

Used to simulate the appearance of raised rolled lead joints

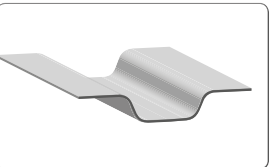
- ER40/30 (30 x 30mm)



G150/G275 External 90° Angle

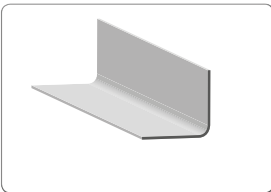
Adhesion on outer face for step detail, cover flashing etc

- G150 (75 x 75mm)
- G275 (200 x 75mm)



H180 expansion joint

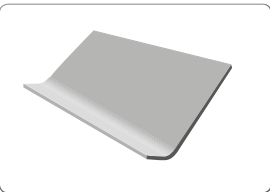
Use to allow for expansion on large roofs over 50m². It will also act as an integral gutter to aid drainage



H150/H275 Internal 90° Angle

Adhesion on inner face for step detail, cover flashing etc

- H150 (75 x 75mm)
- H275 (200 x 75mm)



J380 35° - 50° Flexible Internal Angle

Used to go up any internal angles that are between 35 and 50 degrees from the flat surface

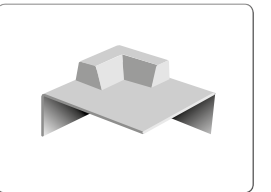
- J380 (85 x 300mm)



F300/F600/F900 Flat Flashing

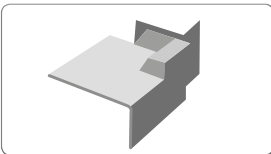
Flat section used for continuous flashing under slates at roof junction

- F300 (300mm x 20m roll)
- F600 (600mm x 20m roll)



C1 Universal External Corner

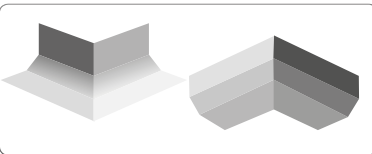
Forms a left or right hand corner. Use with A200 & B260



C2 Left or Right Fillet to Trim

For use where a flat roof meets an abutting wall. Use with A200, B260 & D260

- C2L (left fillet to trim)
- C2R (right fillet to trim)



C3 External or Internal Fillet Corner

Used as a preformed external or internal corner. Avoids mitring in situ. Use with D260

- C3EXT (external fillet corner)
- C3INT (internal fillet corner)



C4 Universal Internal Corner

Forms a left or right hand corner. Use with A200 & B260



C5 & C6 Rolled Rib Closure

C5 to be used with E280
C6 to be used with ER40/30

PREPARATION

**Personal Protection Equipment**

Gloves – Industrial Marigold gloves (reusable), or disposable latex gloves. Overalls – to keep your work wear clean and protected.

**Infrared Thermometer**

Infrared thermometer with laser alignment to accurately measure the surface temperature of the roof. Allows calculation of correct level of catalyst addition needed for your working conditions.

**Bonding Primer**

Damp Seal is a bonding primer to be used on materials such as wood, metal and concrete before laminating. Simply brushed onto clean base substrate, then laminate over once tacky.

COMPONENTS

**Fibreglass and Woven Tape**

With consistent quality, thickness and stiffness, allowing rapid wet out and air release. Available in 450g/m² and 600g/m². Woven Tape is used to bandage small gaps, and join trim edges and corners together. Simply cut the required length and wet out with resin onto the surface. Available in widths ranging from 50mm to 100mm.

**Catalyst**

A catalyst is the activator used to start the curing process of the resin or topcoat. A catalyst MUST BE ADDED to the resin or topcoat to activate the hardening process. Available in 0.5kg, 5kg and 30kg pack sizes. 500ml bottles of 'Winter' Catalyst is available for use with our resins and topcoats in colder conditions.

**Scangrit 3 antislip****Fix ALL**

A high quality, single component joint sealant with high adhesive strength. Also weatherproof and waterproof, which makes this product ideal for our roofing system.

**Easy One**

Easy sanding body filler.

TOOLS

**Buckets**

Use to mix and carry resins and topcoats.

Available in 3, 5, 10 and 25 Litre capacity.

**Brushes**

Designed for use with fibreglass production, these brushes can be cleaned with acetone, which should be allowed to 'flash off' before reuse.

**Dosimeter**

Accurately measure catalyst using a dosimeter. Available in 500ml body with 15ml measuring capacity or 1000ml body with 80ml measuring capacity.

**Rollers**

Fabric Rollers are used to wet out the fibre glass and to evenly spread topcoat across larger areas. Consolidating/ Paddle Rollers evenly disperse resin into the glass fibre, and facilitate air release from the laminate. All rollers can be cleaned with acetone and reused.

**Swivel Pole Sander Head**

Swivel pole sander head for sanding off large areas - use with an extension pole and simply clamp on your sand paper.

CLEANING

**Acetone**

Pure acetone used to clean uncured resin and topcoat from brushes, rollers and other equipment. Please note this material is highly flammable. Available in 5 litre or 25 litre packs.

**Kleen All**

The specialist formulation for removal of uncured resin from the skin (5l packs).

**Swipex**

Heavy-duty wipes impregnated with a liquid formula for removing uncured resin/topcoat from hands, tools and general hard surfaces.

RESPONSIBLE CONTAINER MANAGEMENT SERVICE FOR UK FRP COMPOSITE FABRICATORS

Scott Bader's container management programme offers significant benefit to our customers in terms of reducing the impact of waste on the environment.

By partnering with one of the UK's leading recycling providers, we offer a cost-effective disposal service of used Scott Bader containers.

TRADPAK handles the collection and logistics of all empty 1000 Ltr IBCs FREE OF CHARGE as part of Scott Bader service commitment to you, the customer.

TRADPAK will collect and recycle all IBCs and facilitate returns of other packaging. Costs and conditions for the return of other packaging can be obtained directly from Tradpak.

If you require further information regarding our expanded service please contact your Scott Bader Account Manager or Telesales Agent.



Re-bottled Scott Bader IBCs awaiting inspection

Scott Bader Group Companies

HEAD OFFICE

Scott Bader Company Limited

Wollaston
England
Tel: +44 1933 663100
Fax: +44 1933 666139
email: enquiries@scottbader.com

Scott Bader France

Amiens
France
Tel: +33 3 22 66 27 89
Fax: +33 3 22 66 27 80
email: info_distribution@scottbader.fr

Scott Bader Spain

Barcelona
Spain
Tel: +34 93 553 1162
Fax: +34 93 553 1163
email: diazs@scottbader.es

Scott Bader Germany

Weiden
Germany
Tel: +49 961 401 84474
Fax: +49 961 401 84476
email: composites@scottbader.de

Scott Bader Ireland

Dublin
Ireland
Tel: +353 1801 5656
Fax: +353 1801 5657
email: composites@scottbader.ie

Scott Bader Scandinavia AB

Falkenberg
Sweden
Tel: +46 346 10100
Fax: +46 346 59226
email: composites@scottbader.se

Scott Bader Eastern Europe s.r.o

Mimoň II
Czech Republic
Tel: +420 (0) 487 863 880
Fax: +420 (0) 485 111 254
email: miro@sbee.cz

Scott Bader Croatia

Zagreb
Croatia
Tel: +385 1 240 6440
Fax: +385 1 240 4573
email: info@scottbader.hr

Scott Bader North America

Stow, OH
USA
Tel: +1 330 920 4410
Fax: +1 330 920 4415
email: info@scottbader-na.com

Scott Bader South Africa

Hammarsdale
South Africa
Tel: +27 31 736 8500
Fax: +27 31 736 8511
email: composites@scottbader.co.za

Scott Bader Middle East Limited

Dubai
United Arab Emirates
Tel: +971 481 50222
Fax: +971 488 35319
email: info@scottbader.ae

Abahsain Scott Bader FZ CO

Jebel Ali
United Arab Emirates
Tel: +971 481 50 222
email: info@scottbader.ae

Scott Bader Asia Pacific

Shanghai
China
Tel: +86 (21) 5298 7778
Fax: +86 (21) 5298 8889
email: info@scottbader.cn

Satyen Scott Bader Pvt. Ltd

Mumbai
India
Tel: +91 22 4220 1555
Fax: +91 22 2491 1262
email: info@satyenpolymers.com

NovaScott Especialidades Químicas Ltda

Civit II, Serra, ES 29165-973
Brazil
Tel: +55 27 3298-1100
email: info@novascott.com.br



www.scottbader.com

Leading composites innovation for over 60 years

For more information on Scott Bader products, visit our website

All information is given in good faith but without warranty. We cannot accept responsibility or liability for any damage, loss or patent infringement resulting from the use of this information.

U.K. Composites Marketing, August 2016.
Printed in England.

ANCILLARY AND REINFORCEMENTS 9/16 ISSUE 7

